



April 5, 2020



A Message From The CEO

NEWS FLASH

Dear Friends,

It has been a fast and furious first three weeks on the job! As you may know, I joined Supportive Housing Communities (SHC) as their new CEO on March 16, 2020. Just a few days later, our organization pivoted to a primarily remote work scenario. Originally, our plan was to resume on-site service as usual on April 6th; then, the date changed to April 20th. Given the recent stay-at-home orders issued by both Mecklenburg County and Governor Roy Cooper, we now anticipate resuming on-site operations on May 20, 2020. Please keep in mind this date may also change as we work our way through this national emergency.

Since SHC provides an "essential" human service, the senior team and I, along with some staff are in the office weekly at our headquarters to ensure the continuity of services for our residents and other program participants.

Every new morning is a new blessing and every morning brings a new set of challenges. The team and I are poised to respond to the challenges and are very grateful for the blessings, which include our many community partners who continue to donate needed items for our program participants and make financial contributions to further the work of SHC. We are also grateful for business partners whose understanding and flexibility has allowed us to maintain an efficient operation even in this crisis.

As we end one week and begin another, I wanted to share some GOOD NEWS with you and give our SHC staff a big "shout out" for their diligent work. Like our colleagues in Charlotte's nonprofit sector, SHC staff are flexible, agile, adaptive and have demonstrated their continuing deep commitment to those who are most vulnerable, especially our homeless neighbors.

While the television networks keep us abreast of updates on the worldwide pandemic, SHC staff members are still hard at work moving individuals and families from homelessness to housing. During the past month, the SHC team with many of our supportive community partners, helped make the following possible:

- **2** new move-ins under the *Lake Arbor Resettlement Project*. This brings the total number of households served under this project to thirteen (13).
- **1** new move-in under the *Keeping Families Together Program*. In this program, SHC is collaborating with Mecklenburg County's Division of Youth and Family Services to serve a total of 50 families over the next three years.

· 1 new move-in at St. Johns Place. SHC partners with Mecklenburg County's Shelter Plus Care Program and Cardinal Innovations at St. Johns Place to provide permanent supportive housing opportunities. St. Johns place is a mix income property.

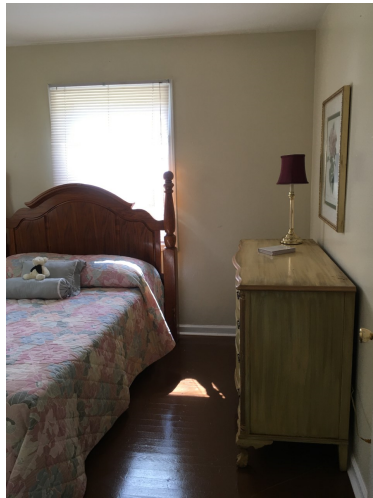
Again, none of this great work could have taken place without the support and involvement of our community partners. Depicted below is one of our amazing community partners, **Homeless Relief Ministry (HRM)**, who furnishes the homes for our new program participants, and Weiser Security Services, Inc., a business partner who provides security services for McCreesh Place and St. Johns Place. Along with HRM and Weiser, we appreciate all of our donors, community and business partners who have come together to ensure that our residents are safe and supported.

Communication is key at all times and especially during the COVID-19 pandemic. I will continue to keep you abreast of our work, accomplishments, needs and other good news. Also, I invite you to contact me at Sherrill@aplacetoliveagain.org if you have any questions, comments, or need additional information on any of our supportive services and programs.

Stay healthy, safe and hopeful!

Sherrill Hampton
Chief Executive Officer
Supportive Housing Communities

Many of our unhoused neighbors have little or no resources and they do not have the ability to furnish their new homes. **Homeless Relief Ministry (HRM)** has been a longstanding community partner whose work furnishing new homes brings boundless joy to SHC's residents and other program participants. The pictures below show two units recently furnished.



The HRM team (pictured below) is led by Peggy Roche, Tom Golden and Bill LaMay. The ministry is a collaboration of three churches: St. Matthew Catholic Church, St. Peter Catholic Church and St. Vincent De Paul Catholic Church.



For all that you do...thank you to recent donors who have given during this time of crisis...

- Alan & Leigh Bryant Family Charitable Fund
- Alicia Gagnon, Community Volunteer
- Albert L. McAulay, Jr.
- Anonymous Donors
- BAE Systems Shared Services, Inc.
- Bob Bishop, Community Volunteer and SHC Board Member
- Bob and Janet Jones, Community Volunteers
- Brian Caldwell
- Bright Blessings
- Caldwell Presbyterian Church
- Clayton Jennette
- Colleen Winslow, SHC Board Member
- Covenant Presbyterian Church
- Debbie Davis & Ann Watkins
- Donna Savage, SHC Board Member
- Dorinda Smith
- Ed & Alicia Gagnon
- Elevation Church
- Eric Williams
- First Presbyterian Church
- Forest Hill Church Noda
- Francesca Wietzbicki, Community Volunteer
- Frank Deaton
- Gillian Brindley
- Gainor Eisenlohr
- Greg Williams
- Holly Lopez
- Horace Bryan, Bryan Realtors
- Jim Teat, Community Volunteer
- John Bates, Community Volunteer

- John Love
- Karen Barton
- Karen DeMay
- Katherine Cochran
- Kevin & Margaret Roche
- Lauren Hornyak
- Leslie Clark, SHC Board Member
- Lucy Taylor
- Malia Suhren, SHC Staff
- Melissa & Bruce Noll
- Michael Corressell
- Michael Rein
- Myers Park Baptist Church
- Myers Park United Methodist Church
- Nancy & Berry Metzger
- Pam & Donald Allen
- Pamela Jefsen
- Peter Vasseur
- Phoenix Fund
- Punkin & Stan Brookshire
- Reverend LR Smalls
- Rick Abrams, Redfox Capital, SHC Board Member
- Rhianna Simard, Regional Manager Southeast Region & Team members - Krispy Kreme Donuts
- Ryan & Shu Wie Baird
- Ryan Stonebrook, Community Volunteer
- Sindy Wylie
- Sue Myrick
- St. Matthew Catholic Church
- St. Paul Baptist Church
- St. Peter Catholic Church
- St. Peter Jesuit Community
- The Weghorst Family
- Thomas Duzan
- Kent Walker, Jr.
- Wachovia/Wells Fargo Foundation Matching Gifts Program

We are truly **GRATEFUL!**

A big thank you to our many supporters who have contributed during this great time of need. Because of your generous donations, we are better equipped to take care of those most vulnerable.

Many of you are still wondering about other ways you can help and, in response, SHC has created a COVID-19 Relief Fund Campaign. You can donate to this campaign here: <https://www.betterunite.com/supportivehousingcommunities-alwayson>



LEARN MORE ABOUT OUR BASIC NEEDS:

Visit our AMAZON WISH LIST [here](#).

In addition to our donors who have supported us, the staff, Board of Directors and I are appreciative of all our business partners who have worked with us during this chaotic time. We would like to highlight one such partner, Weiser Security Services, Inc.:



A special **THANK YOU** goes to Weiser Security Services, Inc., whose staff works diligently with SHC to ensure our residents are safe and protected during this time of crisis. Additional security monitoring is in place at McCreesh Place and St. Johns Place.

New Grant Awarded:



**United Way
of Central Carolinas**



Thank you to the United Way of Central Carolinas and the Foundation For The Carolinas for awarding \$75,000 to SHC from the COVID-19 Response Fund. Nearly 15 million dollars was raised toward the Fund and 14 local nonprofits were awarded funding. Read more [here](#).



THANK YOU to our healthcare workers and first responders working on the front-lines against the COVID-19 virus. You put your lives on the line for us every single day. Again, **THANK YOU!**



Like Us. Follow Us. Support Us.

We'll keep you up to date with our latest programs, events, newsletters, volunteer opportunities and more in just one click!

[DONATE NOW](#)

601 E. Fifth Street, Suite 255 | Charlotte, NC 28202 | 704-335-9380

Would you like to forward this email to a friend? [Click here.](#)

[Remove my name from all future mass email communications:](#)

Address postal inquiries to:
Supportive Housing Communities
601 E. Fifth Street, Suite 255
Charlotte, NC 28202