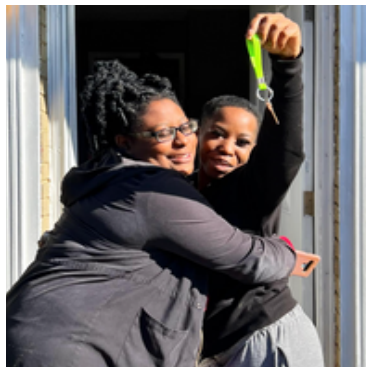
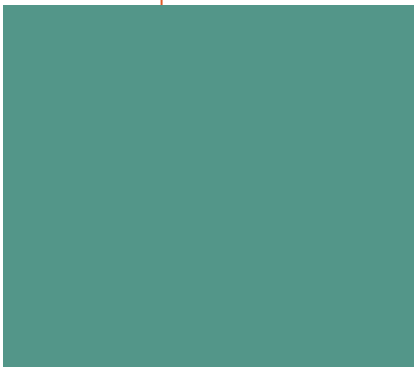
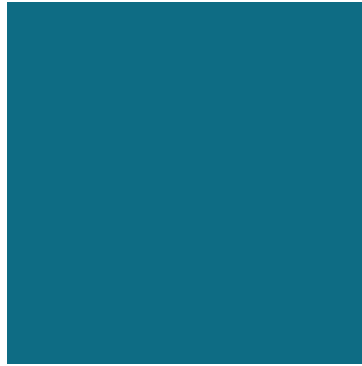


2022-23
**Annual
Report**



**To provide affordable
housing to alleviate
homelessness and
human suffering.**



CEO MESSAGE

At SHC, we deliberately refer to our clients as "neighbors" because it underscores the importance of making them feel valued and supported. Each day, I am reminded of the privilege it is to be part of SHC, working tirelessly to provide affordable housing and support services to our most vulnerable neighbors in Charlotte's metropolitan area. For more than three decades, we have collectively tackled pressing community issues and pioneered innovative solutions, all while driving transformative change for our neighbors.

As we continue to navigate economic instability and high inflation rates, we recognize these things disproportionately impact the very neighbors we serve. Because of your unwavering support, our organization and our leadership are more dedicated than ever. We have stepped up with ingenuity, compassion, resilience, fortitude, and integrity, and will continue to do so every day. We are so grateful to have you as our partner standing with us shoulder-to-shoulder to show love for our neighbors.

Looking towards the future, our vision remains steadfast - a day when homelessness is rare, brief, and a one-time occurrence for households. To achieve this vision, we depend on the continued support of our community.



I implore each of you to renew your commitment to stopping human suffering by working with us to find solutions to our community's most complex challenges around housing instability, for our communities most vulnerable neighbors. Your support, whether through time, talent, or treasure, ensures that our neighbors receive the basic human needs they deserve from our dedicated staff, volunteers, and community partners.

Together, let us dream for a brighter future and work towards a community where no one experiences homelessness. Your commitment is a beacon of hope for those in need, and I am grateful for your ongoing partnership in this shared journey.

Thank you for your unwavering support!

A handwritten signature in cursive script that reads "Laura Caldwell".

Laura Caldwell, CEO
Supportive Housing Communities

OUR COMMITMENT

MISSION To provide affordable housing to alleviate homelessness and human suffering.

VISION To develop and operate permanent supportive housing for men, women, and families overcoming homelessness, especially veterans and those with mental illness, substance use, and medical or other disabling condition.

SHC is the only organization in Mecklenburg County that helps chronically homeless individuals **and** families by combining a full continuum of financial support (so they can afford a place to live) **and** case management (so they can keep it).

OUR WHY

We believe everyone deserves a safe place to call home. Yet today in Charlotte, it's increasingly more difficult to secure safe, affordable housing because of rising costs and a lack of inventory.*

Because of this, more people in our community are homeless. As of June 2023, there were 2,704 people in Mecklenburg County actively experiencing homelessness, an **11% increase** from June 2022 (2,428 people).

At SHC, our primary focus is serving the most vulnerable of these neighbors: those who are chronically homeless (defined as individuals who have been homeless for at least one year) who also have a disabling condition, such as alcoholism, mental illness, or a chronic disease.

We are committed to finding ways to meet the growing need for our services and helping those who need it the most.

**Currently, the Charlotte-Concord-Gastonia Metropolitan Statistical Area (MSA) has a 45,765 deficit of affordable and available rental units at or below 30% Area Median Income (AMI).*



OUR HOW: PROGRAMS



MCCREECH PLACE

McCreech Place opened in 2003 and is Charlotte's first permanent supportive housing complex. Located in the Villa Heights community, McCreech Place is a sober-living community that serves up to 90 residents. Case managers provide supportive services to help the residents achieve self-determined personal goals related to finances, relationships, employment, recovery, and health.



ST. JOHN'S PLACE

SHC acquired and renovated St. John's Place in 2017 to expand the number of permanent supportive housing units and mitigate the loss of affordable housing in Charlotte. SHC reserves at least half of the 31-unit apartment complex for vulnerable clients of partnering organizations such as Roof Above and Mecklenburg County Shelter Plus Care.



SCATTERED SITES / RAPID REHOUSING

Aligned with the Housing First model, SHC's Scattered Sites and Rapid Rehousing programs place individuals and families in privately-owned rental units "scattered" throughout Charlotte. The Rapid Rehousing program is designed to transition residents to self-sufficiency within two years. These programs now house about five times as many residents as McCreech Place.



KEEPING FAMILIES TOGETHER

In our Keeping Families Together (KFT) Initiative, SHC partners with Mecklenburg County's Division of Youth and Family Services (YFS) to serve more than 50 families who have open cases with its Child and Protective Services section to assist with family reunification.

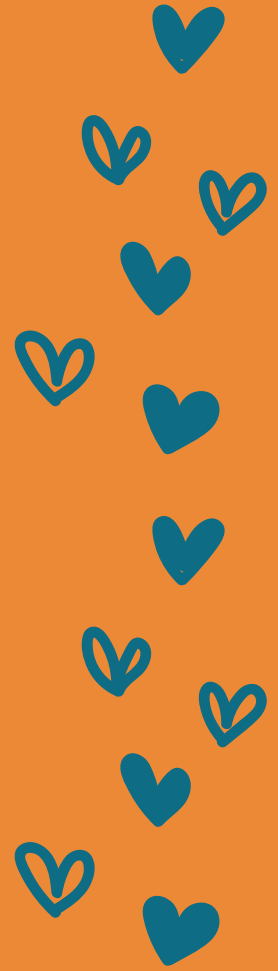


HEALTH AND HOUSING - NEW

SHC's Health and Housing program ensures those who are unstably housed, receive the medical care that they need, while also being provided with a safe and affordable place to heal.

THANK YOU TO THESE PARTNERS!

- Advent Lutheran Church
- Ally Financial
- American Airlines
- Atrium Health
- Bank of America
- Bob Bishop
- Caldwell Presbyterian Church
- Central Piedmont Community College
- Charlotte Hornets
- City of Charlotte
- Covenant Presbyterian Church
- Covenant Presbyterian Young Adults
- CROSS Missions
- Edifice LLC
- Elevation Church
- Hood Hargett and Associates
- Homeless Relief Ministries
- Local Initiatives Support Corporation
- Low's Companies
- McGuireWoods
- Mecklenburg Community Church
- Mecklenburg County
- Myers Park Presbyterian Church
- Myers Park United Methodist Church
- Novant Health
- Park National Bank
- Publix Super Market Charities
- Starbucks
- St. Matthew Catholic Church
- St. Peter Catholic Church
- St. Peter's Episcopal Church
- SteelFab
- Sunbelt Rentals
- Theophilus III Ministry
- The Leon Levine Foundation
- The Merancas Foundation
- Trinity Presbyterian Church
- Vanguard
- Wells Fargo



of volunteers

1,353



of hours served

3,375



of volunteer events

174



Savings in personnel costs utilizing volunteers*

\$107,325

*Estimated national value of a volunteer hour is currently \$31.80

OUR IMPACT



of individuals served

463



of households served

243



of children served

202



of adults served

261



of neighbor move-ins

114



of new jobs secured

31



% of neighbors who remained in stable housing

98%



% of McCreesh neighbors in recovery who did not relapse

98%



% of McCreesh neighbors who did not use emergency services for a mental health crisis.

99%

With a 98% success rate in maintaining stable housing for formerly chronically homeless neighbors, SHC is increasing opportunities and making a significant impact in Charlotte.





I think my favorite volunteer memory (so far!) is related to the mural Covenant YA painted at McCreesh Place in November. The mural required a bit of behind-the-scenes work and during that time, various residents at McCreesh Place came out to help, to have a conversation, to offer feedback, and to share their excitement.

-Mary Kate
Covenant Presbyterian Young Adults

Administration Offices
601 E. 5th Street,
Suite 255
Charlotte, NC 28202

McCreesh Place
2120 N. Davidson Street
Charlotte, NC 28205

St. John's Place
2314 St. Johns Church Rd.
Charlotte, NC 28215



Let's Stay In Touch!

 704.335.9380

 shc@aplacetoagain.org

 supportivehousingcommunities.org



Get Involved!



Invest in our
Mission